

## ACCESS

SBHC assures students' access to healthcare and support services to help them thrive.



## STUDENT FOCUS

SBHC team and services are organized around student well-being and academic success.



## HIGH-QUALITY CARE

SBHC delivers high-quality, comprehensive care to achieve optimal outcomes for students.



## COLLABORATIVE SCHOOL PARTNERSHIPS

SBHC is typically governed and administered separately from the school, works collaboratively with the educational environment to support the school's mission of student success.

## SCHOOL WELLNESS

SBHC engages with the school to participate, support, and improve a culture of health across the school community.



## SYSTEMS COORDINATION

SBHC coordinates across relevant systems of care that share in the well-being of its patients.



# Core Competencies

Tammy Alexander. M.Ed.  
School-Based Health Alliance  
August 10, 2023  
Helena, MT  
Montana Health Care Foundation

## SUSTAINABILITY

SBHC employs sound business management practices to ensure that health services are sustained long-term.





# School-Based Health Alliance

## Transforming Health Care for Students

### Our **Focus**

The School-Based Health Alliance Works to Support & Grow SBHCs

#### Policy



Establishes and advocates for national policy priorities

#### Standards



Promotes high-quality clinical practices and standards, including for telehealth

#### Data



Supports data collection and reporting, evaluation, and research

#### Training



Provides training, technical assistance, and consultation

We support the improvement of students' health via school-based health care by supporting and creating community and school partnerships.

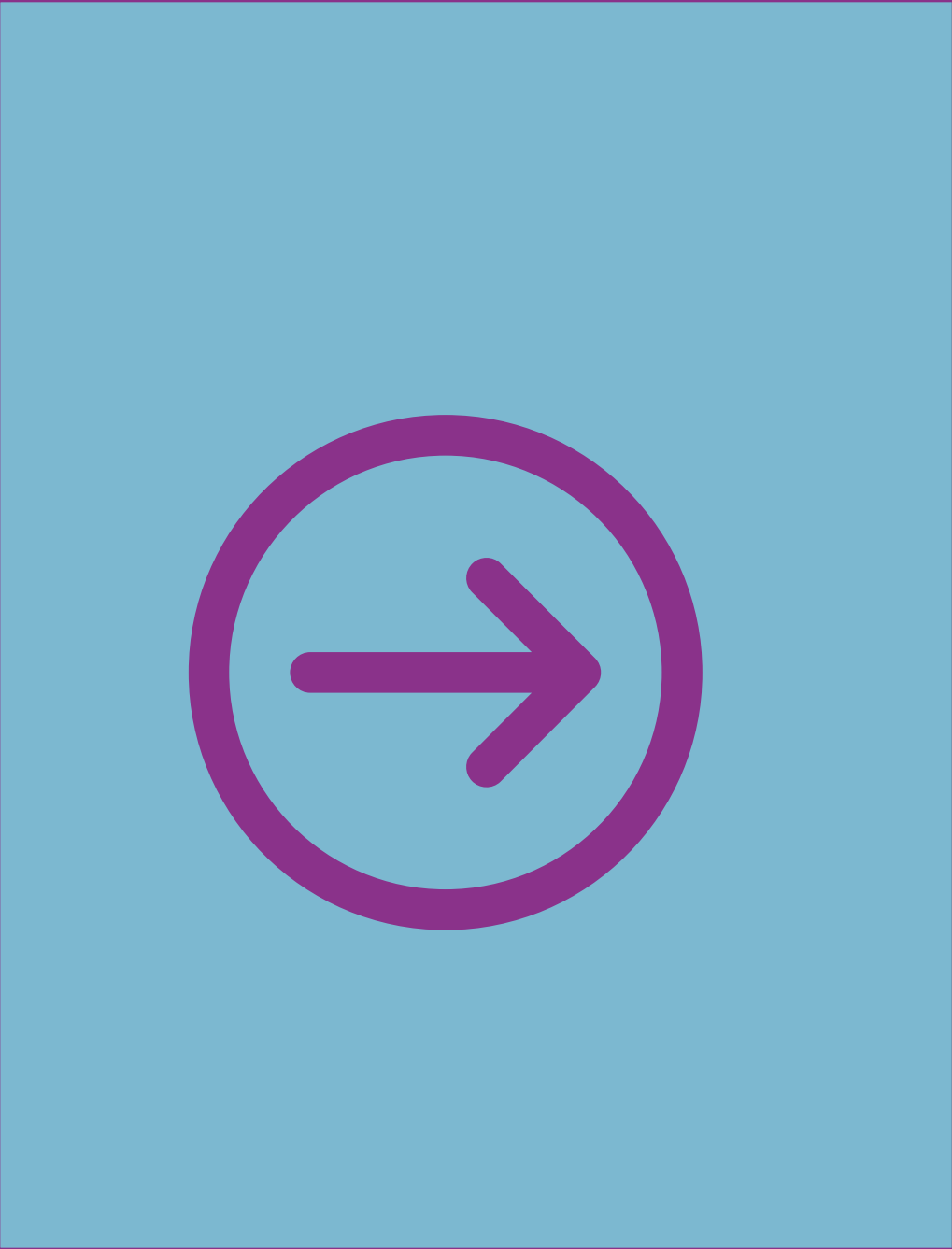
[www.sbh4all.org](http://www.sbh4all.org)

# Guiding Principles

**1. High-quality clinical care and access** are at the forefront of being able to support and achieve our goals.

**2. Diversity, equity, and inclusion (DE&I)** are at the core of our work in helping students, families, communities, and schools achieve their best.

**3. Collaborating with partners** including parents, school staff, and various systems will guide us in our work.



# Diversity, Equity, and Inclusion (DE&I)

- DE&I is at the core of our work in helping students, families, communities, and schools achieve their best.
- DE&I is critical in our work and was missing from our previous version of Core Competencies.
- DE&I is noted as a guiding principle and embedded into each individual Core Competency.



# Discussion



- What **questions** do you have about this CC?
- What **opportunities** do you see related to incorporating this CC into your SBHC?
- What **challenges** do you anticipate related to this CC?
- What **additional partners** might you engage to enhance your work toward this CC?



## ● Access

**SBHC ensures students' access to healthcare and support services to help them thrive.**

- Location
- Modality
- Operations
- Facilities
- Consent
- After-hour care
- Diversity, Equity & Inclusion (DE&I)
- Other populations



# Access in action



**Most SBHCs  
are open  
full time  
(31+ hours/week)**



**SBHCs are located  
in rural, urban,  
and suburban  
communities**



**Use of  
telehealth expands  
access to more  
school  
sites, students in  
their homes,  
students in remote  
areas, specialists**



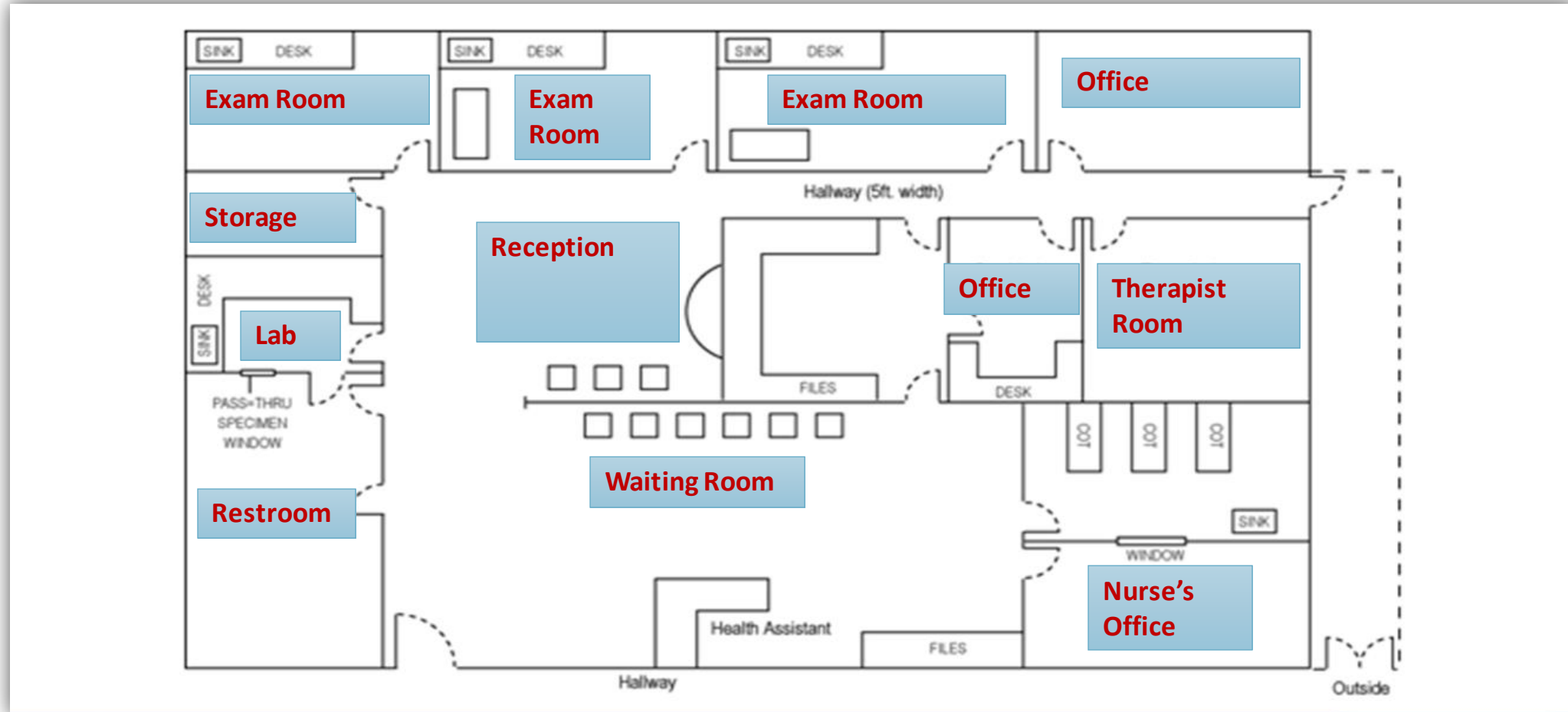
**Many SBHCs serve  
non-student  
populations**



**Informed Consent**

# Access

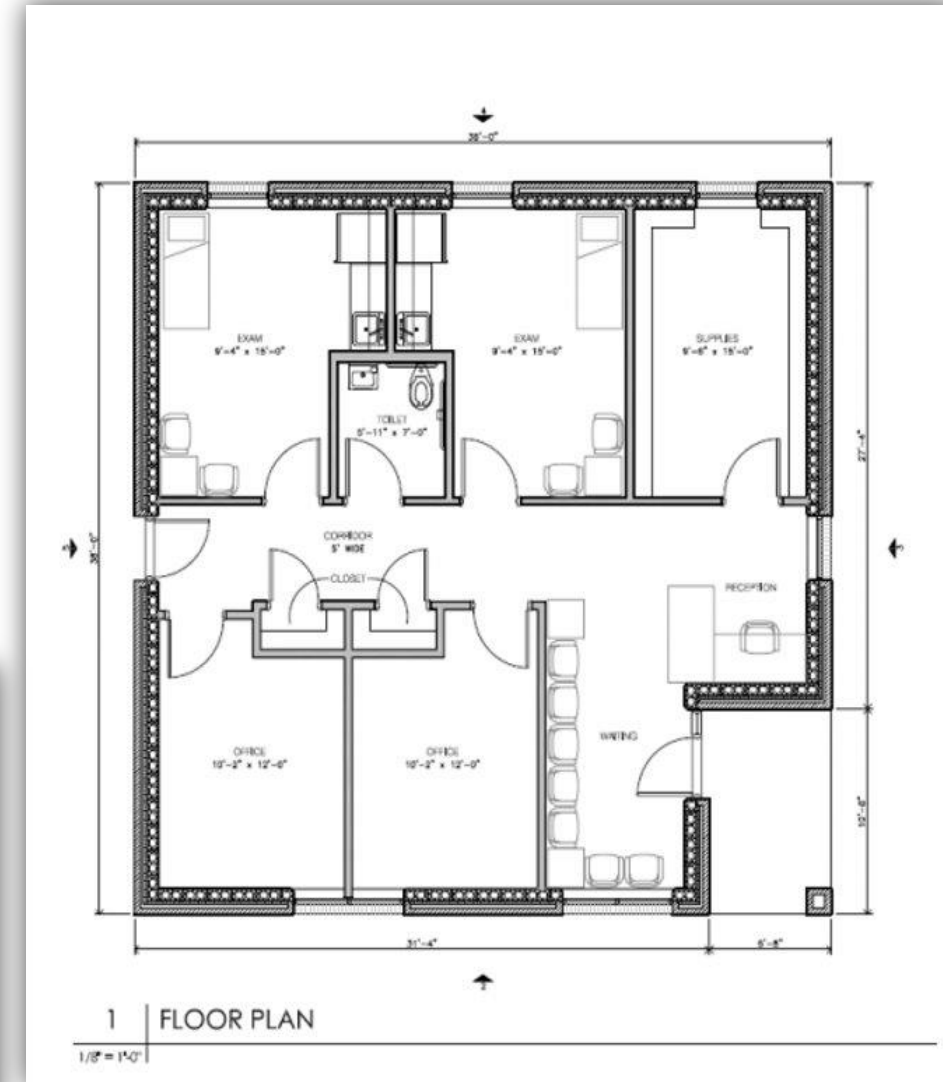
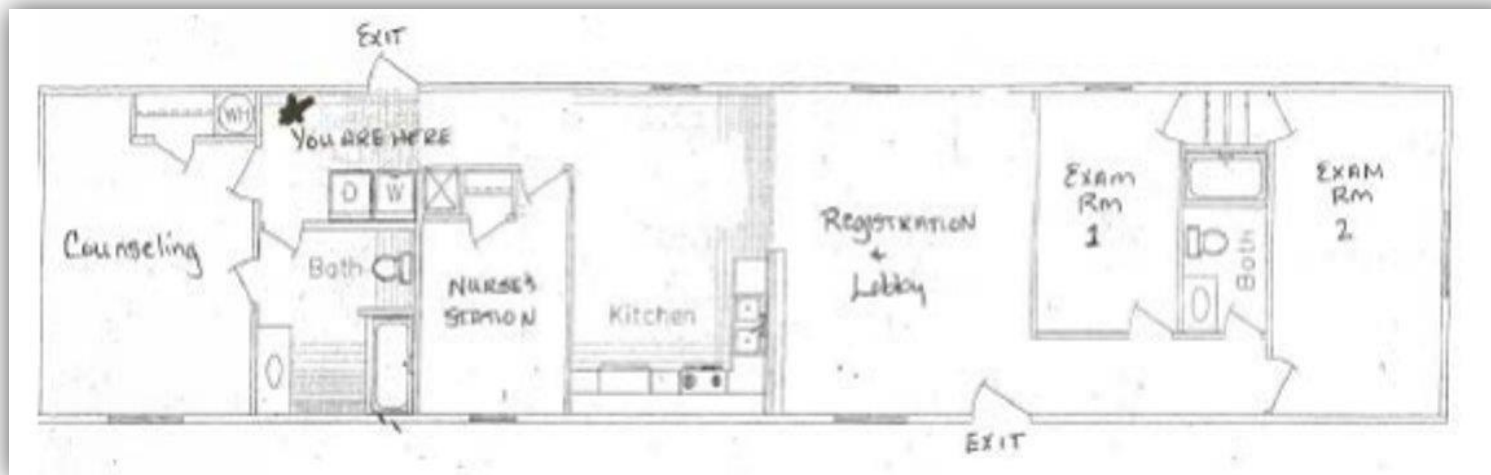
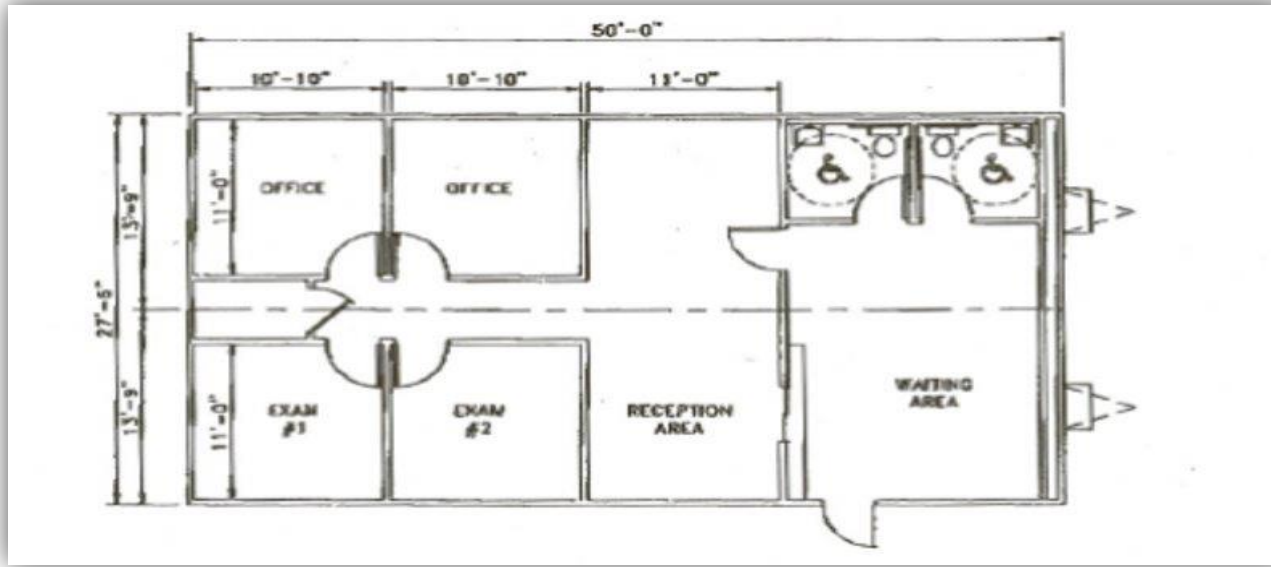
## Ideal SBHC Space





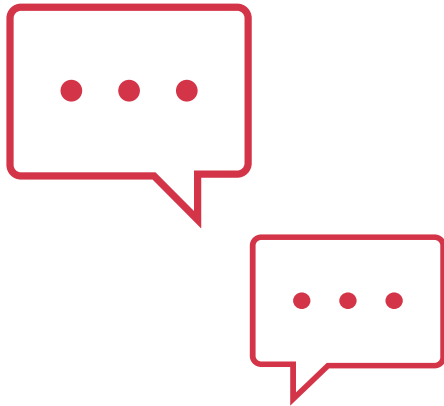
# Access

## Smaller Space Options



# Access

## Discussion



- What **questions** do you have about this CC?
- What **opportunities** do you see related to incorporating this CC into your SBHC?
- What **challenges** do you anticipate related to this CC?
- What **additional partners** might you engage to enhance your work toward this CC?



## ● Student Focus

**SBHC team and services are organized around student well-being and academic success.**

- Comprehensive service scope
- Evidence-based standards
- Strengths-based, healing-centered, and trauma-responsive care
- Competence
- Confidentiality
- Patient engagement
- Youth advisors
- DE&I



# Student Focus

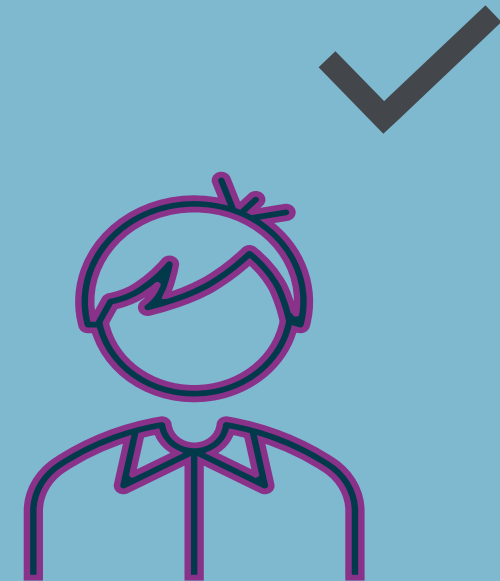
## »» Student Focus In Action

SBHCs engage youth in a variety of ways

- Youth advisory councils
- Provide feedback to the SBHC
- Promote health services
- Organize schoolwide health events
- Peer mentoring, counseling, education
- Advocacy activities

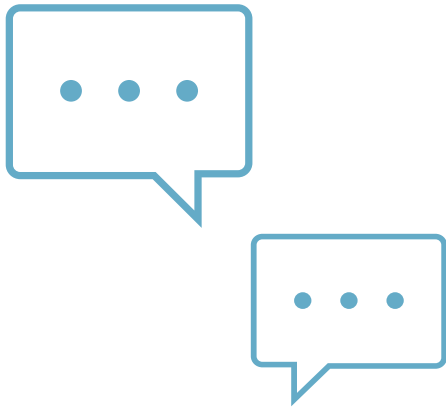
*Lead the Way: Engaging Youth in Health Care*

<http://www.sbh4all.org/training/youth-development/youth-engagement-toolkit/rationale-for-youth-engagement/>



# Student Focus

## Discussion



- What **questions** do you have about this CC?
- What **opportunities** do you see related to incorporating this CC into your SBHC?
- What **challenges** do you anticipate related to this CC?
- What **additional partners** might you engage to enhance your work toward this CC?



## ● High-Quality Care

SBHC delivers high-quality, comprehensive care to achieve optimal outcomes for students.

- Quality care
- Quality Improvement
- Satisfaction
- Performance and accountability
- DE&I



# High-Quality Care

## »» High-Quality Care In Action

- Most SBHCs document and report performance data in accordance with state and national quality measurement frameworks
- SBHCs conduct regular satisfaction surveys
- SBHCs engage in continuous quality improvement initiatives

*SBHA Resource: Quality Improvement*

<https://www.sbh4all.org/what-we-do/initiatives/quality-improvement-resources/>



# High-Quality Care

## Discussion



- What **questions** do you have about this CC?
- What **opportunities** do you see related to incorporating this CC into your SBHC?
- What **challenges** do you anticipate related to this CC?
- What **additional partners** might you engage to enhance your work toward this CC?





## ● Collaborative School Partnerships

SBHC is typically governed and administered separately from the school and works collaboratively with the educational environment to support the school's mission of student success.

- Shared vision for student success
- Shared outcomes
- Crisis response and support
- Intentional systems planning
- DE&I



# Collaborative School Partnerships

## »» Collaborative School Partnerships In Action

- Most SBHCs participate in at least one school team or committee (i.e., Care Team, MTSS Team, Crisis Team, etc.)
  - SBHC staff can join school committees in person or remotely
- SBHC staff have a voice in school policies and procedures that impact student health and wellness
- SBHC staff are part of larger school community events

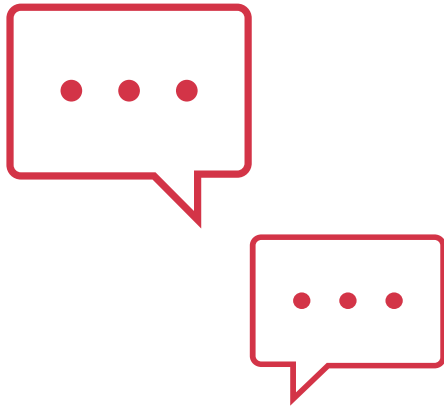
*SBHA Resource: Hallways to Health*

<https://tools.sbh4all.org/hallways-to-health/hallways-to-health-home/>



# Collaborative School Partnerships

## Discussion



- What **questions** do you have about this CC?
- What **opportunities** do you see related to incorporating this CC into your SBHC?
- What **challenges** do you anticipate related to this CC?
- What **additional partners** might you engage to enhance your work toward this CC?

## ● School Wellness

SBHC engages with the school to participate, support, and improve a culture of health across the school community.

- School climate
- Student body wellness
- Family wellness
- Staff wellness
- Health expertise and consultation
- DE&I

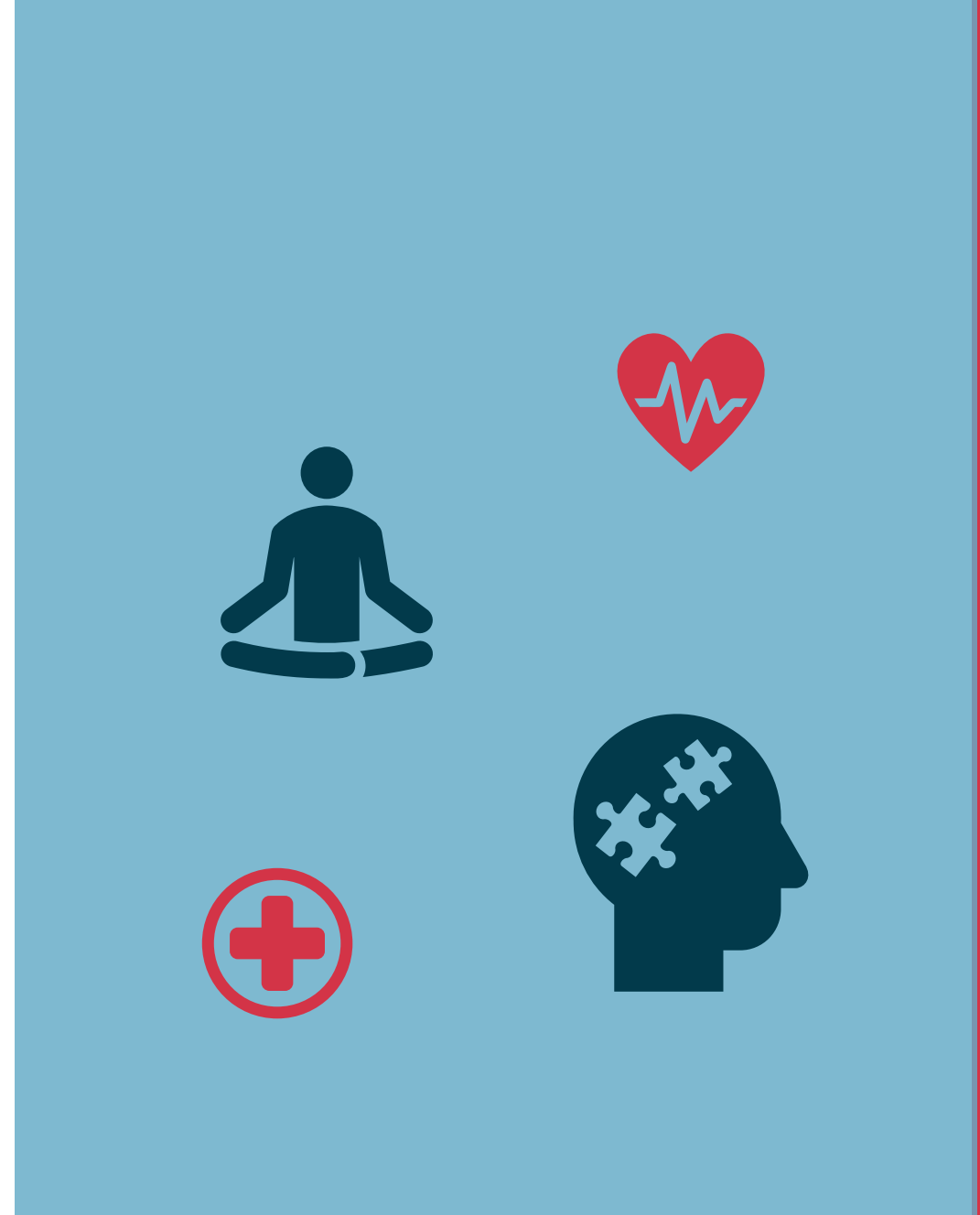


# School Wellness

## »» School Wellness In Action

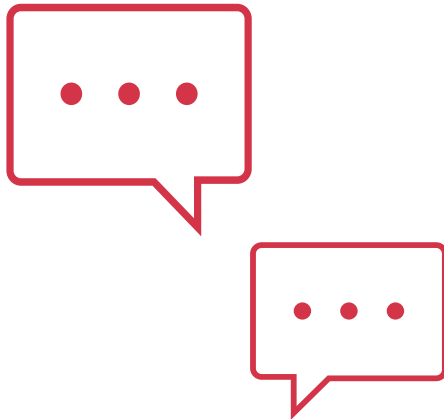
### SBHCs support schoolwide wellness initiatives

- Collaborate with teachers to deliver health education in the classroom
- Provide trauma-informed care training to school staff
- Facilitate wellness programming for school staff
- Expand access and distribution to breakfast, afterschool snacks, weekend food



# School Wellness

## Discussion



- What **questions** do you have about this CC?
- What **opportunities** do you see related to incorporating this CC into your SBHC?
- What **challenges** do you anticipate related to this CC?
- What **additional partners** might you engage to enhance your work toward this CC?



## ● Systems Coordination

SBHC coordinates across relevant systems of care that share in the well-being of its patients.

- Care coordination
- Family engagement
- Community health partnerships
- DE&I



# Systems Coordination

## »» Systems Coordination In Action

- Some SBHCs can access student educational data
- SBHCs coordinate with school mental health professionals to ensure a seamless referral process
- SBHCs collaborate with community partners
- SBHCs engage parents/guardians in a variety of ways
- SBHCs can use telehealth to coordinate care with specialists





# Systems Coordination

## Discussion



- What **questions** do you have about this CC?
- What **opportunities** do you see related to incorporating this CC into your SBHC?
- What **challenges** do you anticipate related to this CC?
- What **additional partners** might you engage to enhance your work toward this CC?



## ● Sustainability

SBHC employs sound business management practices to ensure that health services are sustained long-term.

- Administrative systems
- Billing infrastructure
- Analysis of financial standing
- Sustainable resources
- DE&I



# Sustainability

## »» Sustainability In Action

- SBHCs receive their funding from public and private insurance revenue, as well as a variety of other sources
- Sound business practices
- SBHC cost center
- Equity
- Comprehensive programming
- Working at the top of license

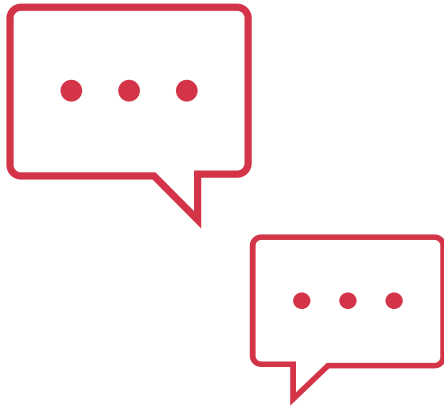


Partnership nurturing



# Sustainability

## Discussion



- What **questions** do you have about this CC?
- What **opportunities** do you see related to incorporating this CC into your SBHC?
- What **challenges** do you anticipate related to this CC?
- What **additional partners** might you engage to enhance your work toward this CC?

## ACCESS

SBHC assures students' access to healthcare and support services to help them thrive.



## STUDENT FOCUS

SBHC team and services are organized around student well-being and academic success.



## HIGH-QUALITY CARE

SBHC delivers high-quality, comprehensive care to achieve optimal outcomes for students.



## COLLABORATIVE SCHOOL PARTNERSHIPS

SBHC is typically governed and administered separately from the school, works collaboratively with the educational environment to support the school's mission of student success.

## SCHOOL WELLNESS

SBHC engages with the school to participate, support, and improve a culture of health across the school community.



## SYSTEMS COORDINATION

SBHC coordinates across relevant systems of care that share in the well-being of its patients.



# Core Competencies

## SUSTAINABILITY

SBHC employs sound business management practices to ensure that health services are sustained long-term.



# Stay Connected!

1. **Subscribe to our bi-weekly e-newsletter (Digest)**  
Go to [sbh4all.org](https://sbh4all.org) > scroll down to the bottom of the page > subscribe!

2. **Follow us on social media**



<https://www.facebook.com/SchoolBasedHealthAlliance>



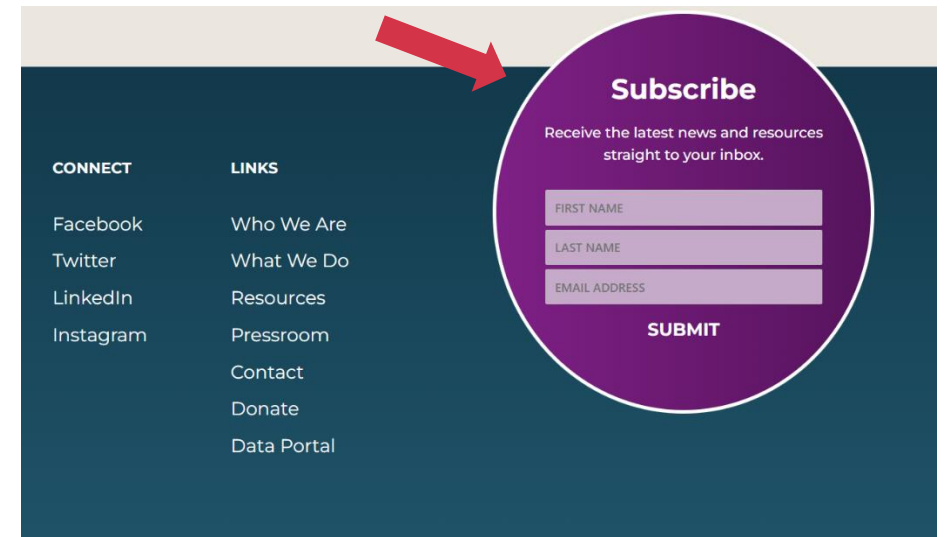
<https://twitter.com/sbh4all>



<https://www.linkedin.com/company/school-based-health-alliance/>



<https://www.instagram.com/sbh4all/>



## Contact Information:

**Tammy Alexander**  
[talexander@sbh4all.org](mailto:talexander@sbh4all.org)